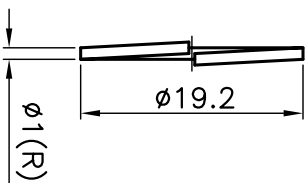
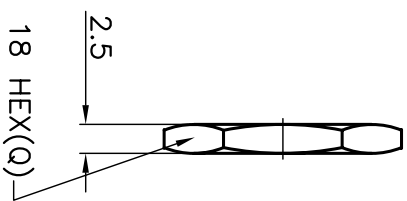


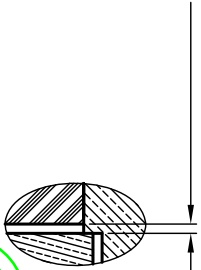
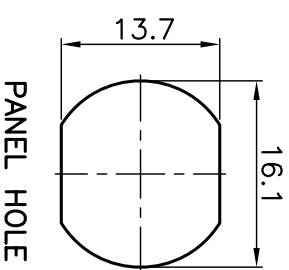
ISS	REVISIONS
	DESCRIPTION\DATE
A	主體長度原32.7mm改為32mm\04/27/10"
A1	中心針SOLDER HOLE1.0mm改為1.5mm\03/21/12"

RoHS COMPLIANT

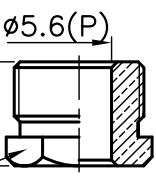
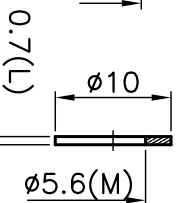
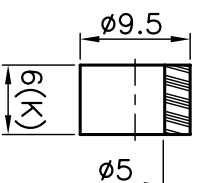
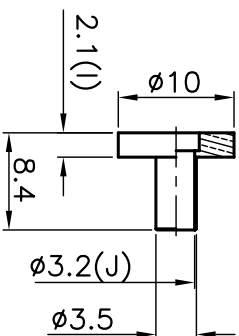
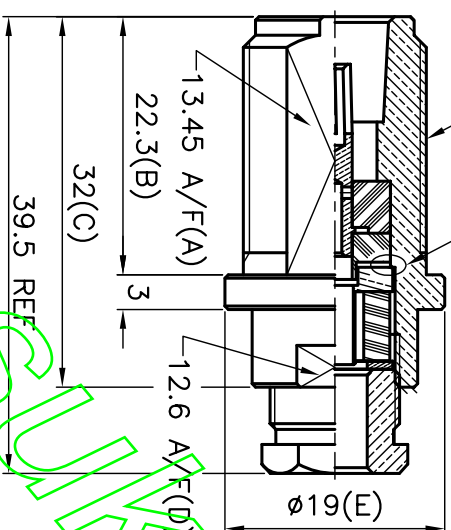


5/8-24UNEF-2A
 $\phi 1.7(S)$

鐵弗龍與主體
 相對位置
 $0 \pm 0.8(T)$



A VIEW



11 HEX(O)

CONNECTORS CABLES
GBS
 SPECIALIST LTD.

TITLE: N FEMALE BULKHEAD CLAMP
 (FOR RG58, RG223)

PART NO:	NBJS C223
DR. NO:	030
DATE:	03/21/12"
SCALE:	1.5/1

APRD:	UNLESS OTHERWISE SPECIFIED TOLERANCES
CHKD:	0.5-6 = ± 0.2
DR:	>6-30 = ± 0.4
	>30-120 = ± 0.6
	>120-315 = ± 1.0
	>315-1000 = ± 1.6
	ANGLES = $\pm 15^\circ$

NO.	DESCRIPTION	MATERIAL	FINISH
	NUT	BRASS	NICKEL
	LOCK WASHER	STEEL	NICKEL
	GASKET	RUBBER	RED
	NUT	BRASS	NICKEL
	WASHER	BRASS	NICKEL
	GASKET	SILICONE	WHITE
	TOP HAT	BRASS	NICKEL
	INSULATOR	TEFLON	WHITE
	CONTACT PIN	PHOSPHOR BRONZE	GOLD
	INSULATOR	TEFLON	WHITE
	BODY	BRASS	NICKEL
		MATERIAL	FINISH